

# PRI – Product Information

June 2020

HCEE-PRI-025 Product Launch HX85A\_EN

## HX85A Product Introduction



### Introduction

---

We are happy to announce the launch of the new HX85A in the midi excavator class. This model will be an addition to Hyundai's Mini & Compact Excavator range and bridge the gap between compact and heavy machines. The HX85A comes with many functions and features adopted from larger excavators, which makes it a top-performing and very user-friendly machine, that finds its ideal work environment on urban job sites.

The 8 to 9 ton midi excavator class is a very popular market segment with many players on the field. The HX85A has been developed with high attention to detail, capitalizing on first-hand market input, making it a competent entrant to the "power utility class". A machine concept packed with a load of features to answer customer demands for a compact and versatile machine, that can show its muscles on job sites where space is tight, and performance is key.



## HX85A Machine Highlights

- EU Stage V compliant engine (Yanmar 4TNV98C)
- Exhaust aftertreatment by EGR / DOC / DPF (no SCR)
- Load Sensing hydraulic system
- Mono or 2-piece boom with standard & long arm option
- 2-way proportional breaker/ clamshell circuit as standard
- New spacious cabin with high-comfort interior
- 7-inch touchscreen display
- Auxiliary hydraulic setting via display – memorize 6 tools

## Key Machine Specifications

| Item                  | Specification       | Measurements  |
|-----------------------|---------------------|---|
| Operating weight      | Mono / 2-piece boom | 8.480 kg / 9.250 kg   |
| Engine model          | YANMAR 4TNV98C      | 4-cylinder, water cooled, direct injection, electronic controlled |
| Engine power          | DIN (gross)         | 67,8 PS (49,9 kW)<br>@ 2.400 rpm                                  |
| Main pump max. flow   | Oil flow/pressure   | 144 l/min / 280 bar   |
| Bucket capacity       | heaped              | 0,25 m <sup>3</sup>   |
| Bucket Breakout Force | ISO                 | 61,6 kN   |
| Arm Tearout Force     | ISO                 | 41,4 kN   |
| Max. digging reach    | 2-pc boom/long arm  | 7.620 mm  |
| Max. digging depth    | 2-pc boom/long arm  | 4.660 mm  |
| Max. dumping height   | 2-pc boom/long arm  | 6.600 mm  |

## Availability

Available to order in the dealer portal (production start in Aug – ETA in Europe Oct 2020)

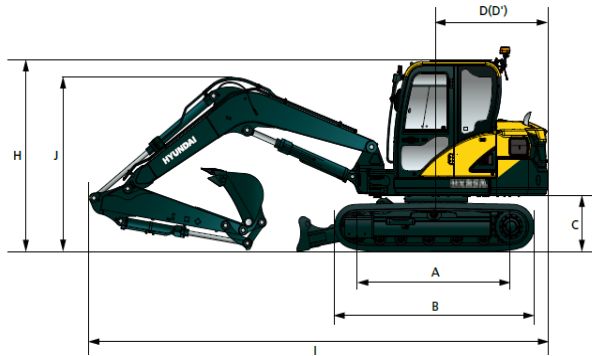


## Standard Machine Description

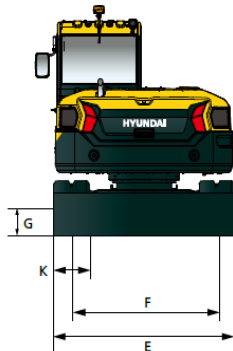
---

|                         |  |
|-------------------------|--|
| <b>Engine</b>           | <p>Eco-friendly, low-noise engine with excellent fuel efficiency<br/>         Yanmar 4TNV98C water-cooled, 4-cylinder, direct injection,<br/>         EU-Stage V compliant, exhaust aftertreatment: EGR / DOC / DPF (no SCR)<br/>         Gross power: 49,9kW (67,8hp) @2400rpm, max torque: 235Nm @1560rpm</p>  |
| <b>Undercarriage</b>    | <p>X-type center frame with reinforced box-section track frames,<br/>         lubricated rollers, track adjusters with shock absorbing springs and sprockets<br/>         450 mm rubber tracks (options available), travel speed from 3,1 km/h to 5,1 km/h<br/>         Fully hydrostatic type with two travel motors and parking brake, auto-idling<br/>         Dozer blade cylinder with safety valve, blade with float position, auto-shift down<br/>         Several tie-down holes for safe transportation, optional travel alarm</p>  |
| <b>Hydraulic system</b> | <p>Load Sensing hydraulic system for fast and precise operation<br/>         Variable displacement piston pump 144 l/min max. flow<br/>         Additional gear pump for pilot circuit<br/>         Work mode selection (standard/power), ECO mode</p>   |
| <b>Upperstructure</b>   | <p>Upperframe with 360° rotation, grease-bathed swing bearing with automatic swing brake, rotation speed 9 rpm, steel counterweight 1000 kg (+heavy option)<br/>         3550 mm Monoboomb with safety valve, overload warning device,<br/>         Optional 2-piece boom with 3920 mm length available<br/>         1750 mm standard arm, optional long arm 2100 mm available<br/>         Front boom swing for work in confined spaces or alongside a wall,<br/>         Proportional double-acting hydraulic piping for breaker/clamshell operation,<br/>         Wear-resistant long-life pins, bushes and polymer shims, main battery switch<br/>         Centralized grease fittings for easier maintenance, optional fuel filler pump<br/>         Boom lamp, 2 working lights on cabin and rotating beacon optional</p>                                    |
| <b>Cabin</b>            | <p>ROPS/TOPS/FOPS cabin, low noise &amp; vibration ergonomic design with 360°visibility<br/>         Sliding fold-up front window with safety glass, sliding window left/right<br/>         Adjustable, heated operator seat, 7" OLED touchscreen with ESL anti-theft function<br/>         Radio MP3-USB player with handsfree phone function, Slope sensor,<br/>         Auto-safety lock function with safety lever on left-hand console<br/>         Ergonomically designed proportional joysticks with seat-mounted arm rests,<br/>         Equipped with ISO excavator controls, one-key system / optional smart key<br/>         Pilot-operated hand lever for dozer blade operation / optional angle blade<br/>         Various storage compartments for operator convenience<br/>         Rear-view camera and Hi MATE telematics available as option</p> |

## Machine Dimensions

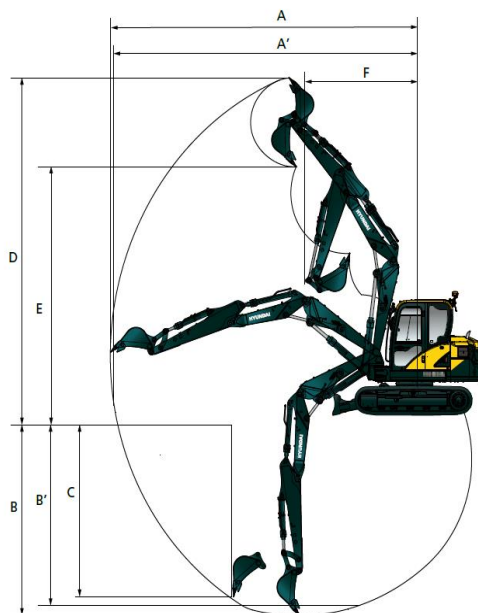


|    |                                   |         |
|----|-----------------------------------|---------|
| A  | Tumbler Distance                  | 2300 mm |
| B  | Overall Length of Crawler         | 2885 mm |
| C  | Ground Clearance of Counterweight | 745 mm  |
| D  | Tail Swing Radius                 | 1600 mm |
| D' | Rear-End Length                   | 1645 mm |
| E  | Overall Width (w/Foot Board)      | 2560 mm |
| F  | Track Gauge                       | 1850 mm |
| G  | Min. Ground Clearance             | 360 mm  |
| H  | Overall Height of Cab             | 2560 mm |



|                          | Mono Boom    |         | 2-piece Boom  |         |
|--------------------------|--------------|---------|---------------|---------|
| Boom Length              | 3550 mm      |         | 3920 mm       |         |
| Arm Length               | 1750 mm      | 2100 mm | 1750 mm       | 2100 mm |
| I Overall Length         | 6585 mm      | 6655 mm | 6790 mm       | 6830 mm |
| J Overall Height of Boom | 2175 mm      | 2465 mm | 2140 mm       | 2455 mm |
| K Track Width            | Steel Tracks |         | Rubber Tracks |         |
|                          | 450 mm       | 600 mm  | 450 mm        |         |

## Working Range



| Monoboom                           | 3550 mm |         |
|------------------------------------|---------|---------|
| Arm length                         | 1750 mm | 2100 mm |
| A' Max. digging reach              | 7090 mm | 7420 mm |
| A' Max. digging reach on ground    | 6940 mm | 7280 mm |
| B Max. digging depth               | 4290 mm | 4640 mm |
| B' Max. digging depth (8' level)   | 3930 mm | 4320 mm |
| C Max. vertical wall digging depth | 3660 mm | 4010 mm |
| D Max. digging height              | 6980 mm | 7230 mm |
| E Max. dumping height              | 4950 mm | 5190 mm |
| F Min. swing radius                | 2515 mm | 2715 mm |

| 2-piece Boom                       | 3920 mm |         |
|------------------------------------|---------|---------|
| Arm length                         | 1750 mm | 2100 mm |
| A' Max. digging reach              | 7290 mm | 7620 mm |
| A' Max. digging reach on ground    | 7140 mm | 7480 mm |
| B Max. digging depth               | 4310 mm | 4660 mm |
| B' Max. digging depth (8' level)   | 4150 mm | 4510 mm |
| C Max. vertical wall digging depth | 3880 mm | 4230 mm |
| D Max. digging height              | 7380 mm | 7650 mm |
| E Max. dumping height              | 5330 mm | 5600 mm |
| F Min. swing radius                | 2475 mm | 2710 mm |

## Machine Features

- **Stage V engine**

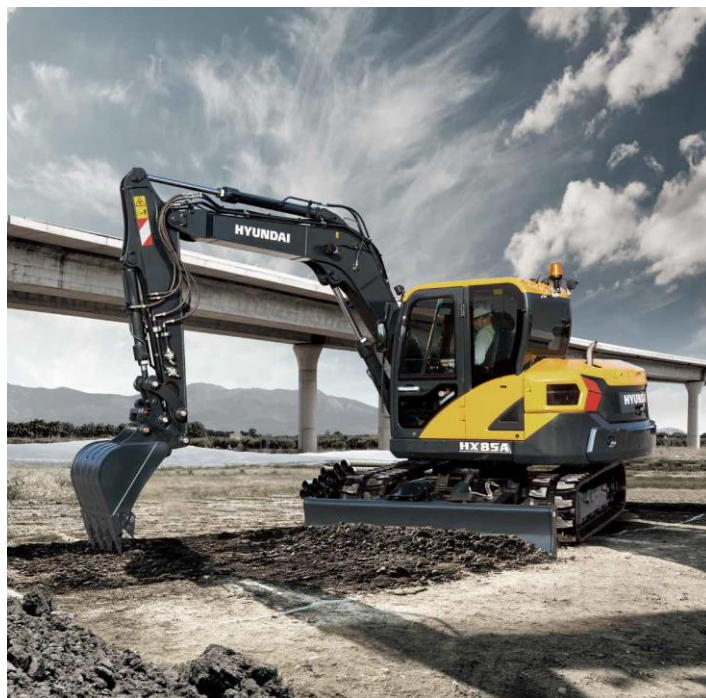
The Yanmar 4TNV98C (Stage V) engine features an intelligent electronic engine management and a self-regenerating DPF exhaust aftertreatment system. The Yanmar common rail technology delivers more peak torque for smooth but powerful operation.

Increased fuel economy and longer service intervals contribute to a reduced cost of operation.



- **Load Sensing hydraulic system**

The load-sensing hydraulic system allows for multi-function operation and precise machine movements. The machine provides smooth controllability no matter how demanding the workload. Exact power when needed also adds to reduce fuel consumption.





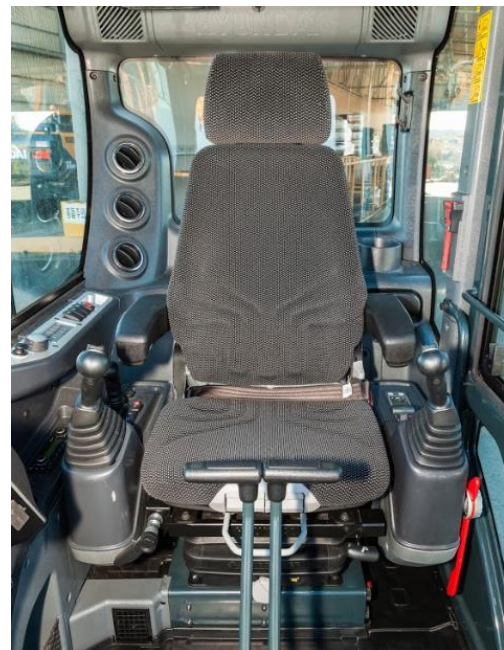
- **Two-piece Boom**



A brand new 2-piece boom gives the midi excavator an all-dynamic working range and considerable flexibility. It allows the machine to extend the maximum reach of the arm as well as working very close to its own tracks. Effective vertical digging becomes natural, same as an impressive overloading height.

- **New cabin interior**

The spacious and safe cabin of the HX85A features an ergonomic design for fatigue-proof working. All functions are well positioned for easy reach. An ideal operator environment for continuous high performance on the job.



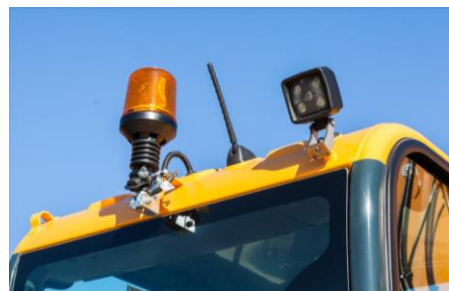
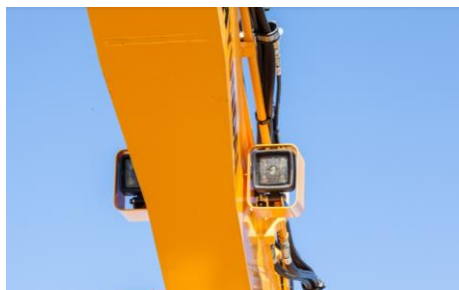
- **7" touchscreen display**

The large and clear-structured instrument cluster offers many functions, such as the selection of work modes, activation of auto-idling and the optional rear-view camera or a permanent slope sensor for improved operator performance.



- **LED lights**

All working lights of the HX85A are optionally available as LED's, boom lamp, cabin lights front and rear as well as the rotating beacon.





- **Proportional auxiliary hydraulic system**

The HX85A comes with factory-mounted proportional 2-way hammer and clamshell piping as standard. The machine is also equipped with proportional joysticks to provide better speed control and precise operation of hydraulic attachments.



The oil flow setting of hydraulic work tools can be managed conveniently via the instrument cluster. A total of six hydraulic attachments can be memorized and applied on demand at any time.



- **4-way angle dozer blade**

The new optional 4-way angle dozer blade offers a great solution for grading material, back-filling of trenches or snow removal. The blade angle is easily adjusted from the cabin by fingertip control, allowing for swift and precise operation. Levelling has never been so convenient.





- **Easy maintenance and service access**



The HX85A has a large rear engine hood and side cover, that opens wide to allow for easy daily maintenance and give excellent access to service areas. Wear parts that require regular replacement, such as filters are conveniently positioned and easy to reach from the ground.

- **Versatility at its best**

#### **COMPACT AND VERSATILE**

The HX85A has been designed with a short rear swing radius, which ensures perfect fit in narrow jobsites where high flexibility is required.

#### **SUPERIOR FORCE AND STABILITY**

The HX85A is the perfect mid-size excavator to perform tasks of superior machines, thanks to his excellent digging forces and lifting capacity.

#### **UNLIMITED FLEXIBILITY**

Quick, precise trench digging, close to a wall or parallel to the machine, using different work attachments, or simply lifting a heavy load. The HX85A takes on every challenge providing continuous customer satisfaction.



## Option Comparison R80CR-9A vs HX85A

The list does not show all available equipment options.

| R80CR-9A           |                                  | HX85A              |                                     |
|--------------------|----------------------------------|--------------------|-------------------------------------|
|                    | Base machine                     |                    | Base machine                        |
| STD                | Boom 3400 mm (swing boom)        | STD                | Monoboom 3550 mm                    |
|                    | n/a                              | NEW OPTION         | 2-piece boom 3920 mm                |
| STD                | Boom safety valve                | STD                | Boom safety valve                   |
| STD                | Arm 1670 mm                      | STD                | Arm 1750 mm                         |
| OPT                | Arm 2200 mm (long)               | OPT                | Arm 2100 mm (long)                  |
| STD                | Arm safety valve                 | STD                | Arm safety valve                    |
| STD                | Counterweight 930 kg             | STD                | Counterweight 1000 kg               |
| OPT                | Counterweight 1330kg long arm    | OPT                | Counterweight 1150kg                |
| OPT                | Breaker & clamshell pip (prop)   | Non-selectable STD | Breaker & clamshell pip (prop)      |
| OPT                | Without breaker&clamshell pip.   |                    | n/a                                 |
| OPT                | Breaker piping single            |                    | n/a                                 |
| STD                | With proportional RCV lever      | Non-selectable STD | With proportional RCV lever         |
| OPT                | Without proportional RCV lever   |                    | n/a                                 |
| OPT                | Rotation piping proportional     | OPT                | Rotation piping proportional        |
| OPT                | Quick coupler piping             | OPT                | Quick coupler piping                |
| STD                | Rubber tracks 450mm              | STD                | Rubber tracks 450mm                 |
| OPT                | Steel tracks 450/600             | OPT                | Steel tracks 450/600                |
| OPT                | Track pad assembly               | OPT                | Track pad assembly                  |
| OPT                | Roadliner tracks                 | OPT                | Roadliner tracks                    |
|                    | n/a                              | NEW OPTION         | Accumulator                         |
| Non-selectable STD | Start switch with same key       | STD                | Start switch with same key          |
|                    | n/a                              | NEW OPTION         | Smart key w/start button (var. key) |
|                    | n/a                              | NEW OPTION         | Smart key w/start button (same key) |
| STD                | Radio & USB                      | Non-selectable STD | Radio & USB                         |
| Non-selectable STD | Working light on boom            | STD                | Working light on boom               |
|                    | n/a                              | NEW OPTION         | Working light on boom LED           |
|                    | n/a                              | NEW OPTION         | Front working light(s) cabin LED    |
|                    | n/a                              | NEW OPTION         | Beacon lamp LED                     |
|                    | n/a                              | NEW OPTION         | Front wire protection               |
|                    | n/a                              | NEW OPTION         | FOG Cabin front                     |
|                    | n/a                              | NEW OPTION         | FOG Cabin top                       |
|                    | n/a                              | NEW OPTION         | Travel Alarm                        |
| OPT                | Fuel filler pump                 | OPT                | Fuel filler pump                    |
| OPT                | Rearview camera                  | OPT                | Rearview camera                     |
| OPT                | Hi MATE mobile 5Y subscription   | OPT                | Hi MATE mobile 5Y subscription      |
| OPT                | Central greasing Beka/Groeneveld | OPT                | Central greasing Beka/Groeneveld    |

